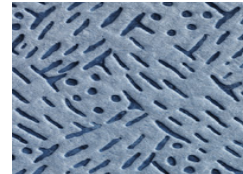


Product Data Sheet for 7622

Product Information

| | |
|-----------------------------|---|
| Product Long Code | 07622000 |
| Customer Facing Code | 7622 |
| Description | KIMTECH* Process Wipers - 1/4 Fold / Blue |
| PDS Reference | 08/11/2013 |



Product Dimensions

Case Contents 12 Bags x 35 Sheets = 420 Sheets

| Dimension | | |
|-----------|---|--------------------|
| 38.10 | x | 49.00 |
| | | Length x Width(cm) |



Brand Statements

A range of reliable, high-performance wipers, each suited to a specific task in controlled areas like transport, healthcare and manufacturing.

Ideal for: repeat-use cleaning with chemicals and solvents, without leaving lint.

Available as: quarter folded wipers, wrapped in a splash-proof, water-repellent polybag, giving you immediate access to hygienically protected wipers in your work area.

Product Specifications

| | | | |
|--------------------------|----------------|--------------------------|----------------|
| Fold Type | 1/4 | Impregnated | No |
| Bar Code (Case) | 05027375018886 | Bar Code (Pack) | 5033848004294 |
| Recycled Fibre(%) | 0 | Virgin Fibre(%) | 100 |
| Technology | Meltblown | Country of Origin | UNITED KINGDOM |
| Colour | Blue | | |

International Standards and Symbols

Marketing



TECHNOLOGY

WYPALL* Cleaning
Wipes/KIMTECH PURE

Solution



Safer Workplace

We know staff safety is your top priority. You can rely on our solutions to protect them, their environment and your important work.



Productive Workplace

The success of your business hinges on your work efficiency. That's why our solutions are designed to help improve your productivity.

Product Data Sheet for 7622

Packaging

| | | | |
|----------------------------|----------|-----------------------------------|------------------|
| Unit Of Sale | Case | Net Weight(kg) | 6.8 |
| Max Weight(kg) | 8.42 | Case Dimension (LXWXH)(cm) | 52 x 39.5 x 29.5 |
| Inner Pack Material | Plastic | Outer Pack Material | Paper |
| Commodity Code | 56031390 | | |

| Pallet Type | LxWxH (m) | Cases per Layer | Layers per Pallet | Cases per Pallet |
|-------------|--------------------|-----------------|-------------------|------------------|
| A2 | 1.20 x 1.00 x 1.33 | 6 | 4 | 24 |

Information

It is the employer's responsibility to assess the risk of the task to be undertaken and determine the correct choice of wipers for the task. The manufacturer, Kimberly-Clark, does not accept any responsibility for the incorrect choice or misuse of wipers shown in this brochure. All care has been taken to ensure that the information contained herein is as accurate as possible at the time of publication, however errors may occur and legislation concerning personal protective equipment is under constant review and may change in the lifetime of this brochure. Accordingly, the specifications for the products may be subject to change. We would advise you to contact INFOFAX if you have any queries concerning the products shown or the suitability of such products for the particular task. Always dispose of used protective equipment in a safe and appropriate manner in accordance with European, National and Local environmental regulations

Infofax Details infofax@kcc.com **Websites** www.kcprofessional.co.uk

Customer Service Number For more information please contact Customer Service during regular office hours-0870 551 044