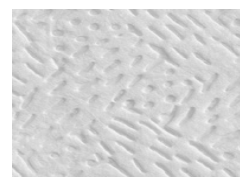


Product Data Sheet for 7624

Product Information

Product Long Code	07624000
Customer Facing Code	7624
Description	KIMTECH PURE* Cleaning Wipers - 1/4 Fold / White
PDS Reference	04/03/2014



Product Dimensions

Case Contents 12 Packs x 35 Sheets = 420 Sheets

Dimension			
38.50	x	35.10	Length x Width(cm)



Brand Statements

A range of high-performance wiper solutions, suitable for ISO Class 4 or higher cleanroom environments. Ideal for: dry wiping of critical equipment and surfaces in pharmaceutical, high-tech biotechnology, medical device industries and food processing industries.
Available as: white, 1ply, quarter fold wipers, wrapped in a splash-proof, water-repellent polybag, giving you immediate access to hygienically protected wipers in your work area.

Product Specifications

Fold Type	1/4	Impregnated	No
Bar Code (Case)	05027375019708	Bar Code (Pack)	5033848005161
Recycled Fibre(%)	0	Virgin Fibre(%)	100
Country of Origin	UNITED STATES	Colour	White

International Standards and Symbols

Marketing



TECHNOLOGY

Technology

Solution



Safer Workplace

We know staff safety is your top priority. You can rely on our solutions to protect them, their environment and your important work.



Productive Workplace

The success of your business hinges on your work efficiency. That's why our solutions are designed to help improve your productivity.

Packaging

Unit Of Sale	Case	Max Weight(kg)	0.73
Case Dimension(LXWXH)(cm)	40 x 38 x 25.2	Inner Pack Material	Plastic
Outer Pack Material	Paper	Commodity Code	56031290

Pallet Type	LxWxH (m)	Cases per Layer	Layers per Pallet	Cases per Pallet
E3	1.20 x 0.80 x 1.66	6	6	36

Product Data Sheet for 7624

Information

It is the employer's responsibility to assess the risk of the task to be undertaken and determine the correct choice of wipers for the task. The manufacturer, Kimberly-Clark, does not accept any responsibility for the incorrect choice or misuse of wipers shown in this brochure. All care has been taken to ensure that the information contained herein is as accurate as possible at the time of publication, however errors may occur and legislation concerning personal protective equipment is under constant review and may change in the lifetime of this brochure. Accordingly, the specifications for the products may be subject to change. We would advise you to contact INFOFAX if you have any queries concerning the products shown or the suitability of such products for the particular task. Always dispose of used protective equipment in a safe and appropriate manner in accordance with European, National and Local environmental regulations

Infobox Details

infofax@kcc.com

Websites

www.kcprofessional.com

Customer Service Number

For more information please contact Customer Service during regular office hours-0870 551 044