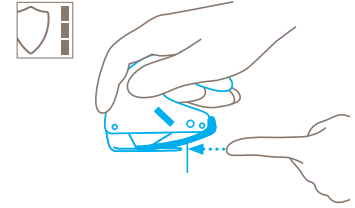


TECHNICAL DATA SHEET

SECUMAX OPTICUT  
NO. 436

Safety technology



**Concealed blade – a maximum degree of safety**

The SECUMAX OPTICUT blade is not an open one, but is hidden from people and goods. This provides you with the highest degree of safety from cut injuries and from damage to goods.



SAFETY KNIFE WITH CONCEALED BLADE, PLASTIC MATERIAL GUIDE AND METAL GLIDE FOOT.

Order No. 436.02

**Glides over the material. And right through the middle. For "pull" cutting.**

You are looking for a film and foam cutter that effortlessly cuts harder and stronger film? One that's not afraid of stubborn foam? You have found the best possible solution with the SECUMAX OPTICUT. Its Teflon-coated metal foot makes it both extremely abrasion resistant and easy to slide. Glide with jam-less ease through whatever material you want to cut. Ideal for "pull" cutting.

**Work ergonomically**

It's easy to work ergonomically with the SECUMAX OPTICUT. Your fingers will be delighted with the sizable grip, your thumb with the additional curving at the front of the handle. Glide cutting couldn't be more comfortable.

**Cut clean**

Whether cutting foam or film, the bendable plastic material guide reliably stops material jamming in front of the blade. The guide also protects your fingers from contact with the blade.

**Extremely robust**

The glide foot, made of Teflon-coated metal, is both durable and robust. The foot and the similarly robust handle are firmly screwed together; you will be sure to enjoy your cutting tool for an extended period of time.

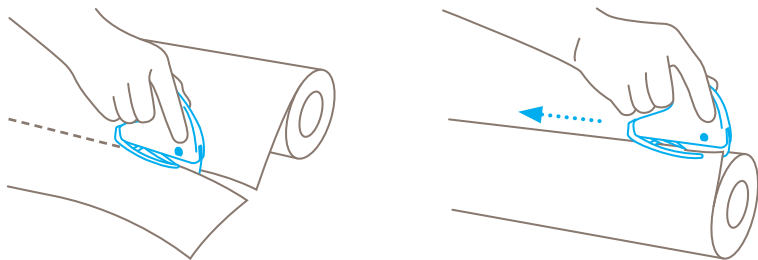
**Easy blade change**

Blade change is performed using the small, rotating catch found on the cutter side. Swing, press and release the glide foot. The blade is housed within the foot. Replace or rotate the blade before pushing everything back into place.

**4-cutting edge blade**

Before you need to change your blade, you have the option of rotating it multiple times. Four times to be precise. In this way, you can get so much more out of your blade. Practical for you, favourable for your company!

## USAGE



## PRODUCT FEATURES

### Technical features



Maximum safety



Tool-less blade change



Very abrasion resistant



Very ergonomic



4-cutting edge blade



Cutting depth



For right and left handers



Printable for promotional purposes

### Main cutting materials



Cardboard: 1-ply



Wrapping, stretch and shrink foil



Plastic strapping band



Layers of foil or paper



Coated film



Laminated film



Foam, polystyrene



Textile, material

### Installed blade



**NO. 37040**  
0.40 mm

### Optional blade



**NO. 37044**  
0.40 mm, deep-edged



**NO. 13730**  
0.30 mm, stainless



**NO. 83730**  
0.30 mm, stainless,  
TiN-coated

## BLADE CHANGE



**Lift** the catch and move downwards until its end covers the blade change button.



Press the catch and remove the metal foot from the handle. Replace or reverse the blade.



Press the catch again and insert the metal foot back into the handle until it **clicks**. Check that the foot is correctly inserted.



Move the catch back into the **starting position**.

## SERVICES OFFERED



Safety poster



Training video



Technical data sheet



Consulting service

## PRODUCT AND PACKAGING DETAILS

Order No.	NO. 436.02	Packaging unit	1 in single unit box
Knife size (L x W x H)	112 x 19 x 84.5 mm	Size Single unit box	113 x 23 x 88.0 mm
Weight knife	74.0 g	Weight single unit box	91.0 g
Basic material	Plastic	EAN Code single unit box	4002632803550
Cutting depth	7.5 mm	Quantity in outer pack	5 knives
		Size outer pack	130 x 93 x 118.0 mm
		Weight outer pack	500.0 g
		EAN Code outer pack	4002632853555
		Customs tariff number	82119200

## SAFETY ADVICE

To ensure that you use your new MARTOR knife safely and most effectively, please read and note the following user-instructions. Please keep the written guide in a safe place so that you can access it at any time.

**1. General application instructions:** Please always use the product carefully for manual cutting work only and not for any purposes other than those that are intended. Please take the correct handling and the proper use of the knives into account in this regard. As an additional safety measure, we recommend the wearing of safe gloves.

**2. Special application instructions to avoid the danger of injuries:** Always take great care when handling the product. Before first use, familiarise yourself with the safety technology and how it works. Before every further use, check the knife for proper functioning. Only use cutting tools that are in perfect condition with sharp, clean and undamaged MARTOR blades. Also make sure that the knife's operation is not impaired by the material to be cut or by dirt or particle deposits around the blade. **CAUTION: The blade is sharp and can result in serious and deep cuts. Therefore, never reach into the blade!** Do not place your free hand in the line of cutting and never cut directly towards you.

**3. Replacement of spare parts:** Replace any blades that become dull at the right time! Use only the replacement blades from MARTOR for this purpose. Dispose of old blades in a proper fashion. They should not be placed in a waste paper bin, as this poses a considerable danger of injuries. Never perform any repairs yourself. If the knife shows signs of aging or any other wear, e.g. which impair safety features, blade changing or usage, the knife must be taken out of service and replaced. Do not modify this product in any way. Modifications of any kind may impair product safety. **CAUTION:** The risk of injury caused by manipulation of this product is extremely high.

**4. Non-use of the knife:** Always secure the blade in such a way (depending on product type) that injuries due to cuts are excluded. Store the knife in a secure place.

**5. Care instructions:** To guarantee a long service life, always keep the knife clean and do not expose it to unnecessary soiling and humidity.

**CAUTION: No liability will be assumed for consequential losses. Subject to technical changes and errors! This knife does not belong in the hands of children!**

## ACCESSORIES

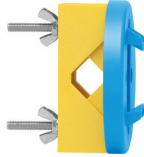
---

### USED BLADE CONTAINER NO. 9810



You can fill the USED BLADE CONTAINER with the content of your SAFEBOX. Or directly with your used blades. When the box is full, turn the lid until it shuts. Now the box cannot be reopened. The next step is to safely and completely dispose of the filled USED BLADE CONTAINER as normal waste.

### WALL MOUNT BRACKET USED BLADE CONTAINER NO. 9845



Include it in your order now! With this mounting bracket you can fix your USED BLADE CONTAINER to a central location. Use the clamp and screws and nuts supplied with the product to attach it to either a pipe or a rod.

### SAFEBOX NO. 108000



The SAFEBOX is large enough to store a large number of used blades safely. And at the same time, it is compact enough to carry with you. The two slits are not only used for filling, but also to "shorten" your snap-off blades. When your SAFEBOX is full, empty it into your USED BLADE CONTAINER.

---

## MANUFACTURER

MARTOR KG | Lindgesfeld 28 | 42653 Solingen | Germany  
T +49 212 73870-0 | info@martor.de | www.martor.com